



# PRODUCT GUIDE

TRENCH BOXES • ROAD PLATES • ENGINEERING SERVICES



**4-Horn**  
TRENCH & SHORING

**4HORNTRENCH.COM**  
**800.381.0176**



# WHY CHOOSE 4-HORN TRENCH & SHORING?

## RELENTLESS CUSTOMER SERVICE

We offer tailored design solutions and on-site setup, managing projects from pre bid work scope to final teardown with extensive experience and reliable service.

With branches throughout United States and the newest and fastest growing fleet in the industry, you can count on 4-Horn Trench & Shoring to provide the equipment and expertise to get the job done.



**4-HORN TRENCH & SHORING WORKS FOR YOU**  
**24/7/365**



## OUR INDUSTRIES

- ✓ Municipal
- ✓ General Construction
- ✓ Industrial
- ✓ Pipeline



# WHY CHOOSE 4-HORN TRENCH & SHORING?

## OUR PEOPLE

We know the trench & shoring markets and are prepared to take on any job, any time, anywhere.

When you engage 4-Horn Trench & Shoring, you're dealing with the best in customer service.



## OUR FLEET

We have the most meticulously inspected and highest-quality fleet in the market, giving us the ability to solve simple problems or provide customized solutions with reliable equipment.



## OUR SOLUTIONS

Whatever your underground municipal, general construction, industrial, or pipeline needs, you can count on us 24/7/365.

With an industry-leading safety record, we make your crew's protection our top priority.





# TRENCH SHIELDS



## DOUBLE-WALL TRENCH SHIELDS

Trench shields are ideal for municipal maintenance and repair, cable splices, pipeline bellholes, vault placements, trenchless technology pits and light utility installations.

### Features include:

- Steel & aluminum construction
- 8'x10' – 8'x32' & 10'x10' – 10'x24' Sizes
- 3' – 20' spreaders in stock, custom sizes available
- Replaceable push blocks
- 1/2" Steel reinforcement plates
- 5 Spreader sockets
- Heavy-duty stacking sockets
- Thru-wall spreader sockets
- Easy-access lifting pockets
- Certification plate



MODEL	DIMENSIONS (Ft.)		PIPE CLEARANCE (in.)	WEIGHT (Lbs.)	SHIELD CAPACITY P.S.F.	MAXIMUM DEPTH RATING FOR SOIL TYPE (Ft.)			
	HEIGHT	LENGTH				A-25	B-45	C-60	C-80
<b>4" DOUBLE WALL</b>									
TS-0408-DW4	4	8	20	2,430	5,540	50	50	50	50
TS-0410-DW4	4	10	20	2,780	3,390	50	50	50	43
TS-0412-DW4	4	12	20	3,150	2,280	50	50	38	29
TS-0416-DW4	4	16	20	3,730	1,230	47	27	21	16
TS-0420-DW4	4	20	20	4,420	770	29	17	13	10
TS-0808-DW4	8	8	62	4,220	2,100	50	48	37	29
TS-0810-DW4	8	10	62	4,435	1,680	50	39	30	24
TS-0812-DW4	8	12	62	5,200	1,400	50	33	26	21
TS-0816-DW4	8	16	62	7,350	1,250	50	30	24	19
TS-0820-DW4	8	20	62	9,550	900	36	22	18	14
<b>6" DOUBLE WALL</b>									
TS-0412-DW6	4	12	20	3,270	3,680	50	50	50	47
TS-0416-DW6	4	16	20	4,590	1,990	50	44	34	26
TS-0420-DW6	4	20	20	5,240	1,250	48	28	22	17
TS-0424-DW6	4	24	20	6,300	850	32	19	15	12
TS-0428-DW4	4	24	20	7,230	620	23	14	11	9
TS-0812-DW6	8	12	65	6,880	2,030	50	47	36	28
TS-0816-DW6	8	16	65	8,525	2,000	50	46	36	28
TS-0820-DW6	8	20	65	9,980	1,250	50	30	24	19
TS-0824-DW6	8	24	65	12,400	960	38	24	19	15
TS-0828-DW6	8	28	65	15,650	790	32	20	16	13
TS-1012-DW6	10	12	86	8,410	1,600	50	38	30	24
TS-1016-DW6	10	16	86	10,560	1,200	49	31	24	19
TS-1020-DW6	10	20	86	12,540	960	40	25	20	16
TS-1024-DW6	10	24	86	15,035	860	35	22	18	15
TS-1028-DW6	10	28	86	19,880	770	32	20	16	13



# TRENCH SHIELDS



MODEL	DIMENSIONS (Ft.)		PIPE CLEARANCE (In.)	WEIGHT (Lbs.)	SHIELD CAPACITY P.S.F.	MAXIMUM DEPTH RATING FOR SOIL TYPE (Ft.)				
	HEIGHT	LENGTH				A-25	B-45	C-60	C-80	
<b>8" DOUBLE WALL</b>										
TS-0420-DW8	4	20	20	6,450	1,800	50	40	30	24	
TS-0424-DW8	4	24	20	7,460	1,230	47	27	21	17	
TS-0428-DW8	4	28	20	8,600	900	34	20	16	12	
TS-0432-DW8	4	32	20	9,460	680	26	15	12	10	
TS-0620-DW8	6	20	42	9,360	1,790	50	41	31	24	
TS-0820-DW8	8	20	65	11,950	1,780	50	41	32	25	
TS-0824-DW8	8	24	65	13,260	1,220	49	29	24	19	
TS-0828-DW8	8	28	65	16,670	1,270	50	30	24	19	
TS-0832-DW8	8	32	65	21,890	960	39	24	19	15	
TS-1020-DW8	10	20	86	14,420	1,320	50	33	26	21	
TS-1024-DW8	10	24	86	16,390	1,100	47	28	22	18	
TS-1028-DW8	10	28	86	18,700	920	37	23	19	16	
TS-1032-DW8	10	32	86	24,490	870	36	22	18	15	



**ALWAYS LEAD, NEVER FOLLOW**



# TRENCH SHIELDS

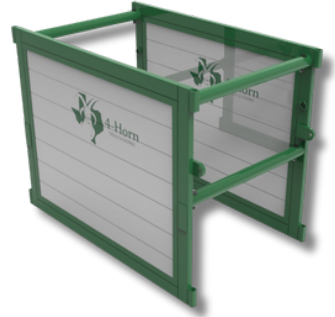


## STEEL FRAMED ALUMINUM PANEL SHIELDS

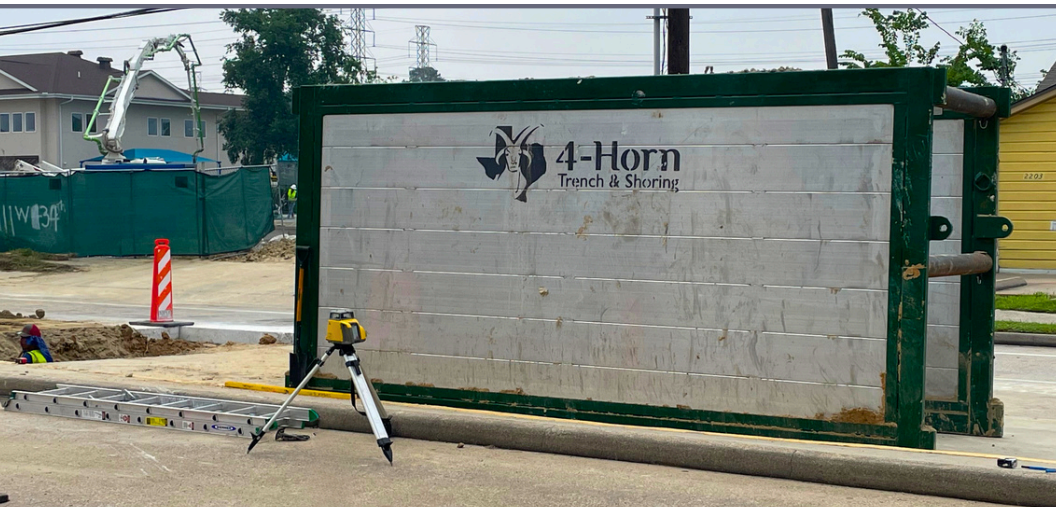
Aluminum trench shields provide lightweight soil protection and come in a variety of configurations.

### Features include:

- 2 1/2" Aluminum double-wall panels
- Exclusive welded steel frame
- Foam-filled smooth walls
- Thru-wall spreader sockets
- Heavy-duty lifting rigs
- Stacking sockets
- Steel pulling eyes



MODEL	CAPACITY P.S.F.	MAXIMUM DEPTH RATING FOR SOIL TYPE (Ft.)				VERTICAL PIPE CLEARANCE (In.)	APPX. WEIGHT (Lbs.)
		A-25	B-45	C-60	C-80		
APS-SF-0406	2,605	50	50	44	34	22	970
APS-SF-0408	1,869	50	42	32	24	22	1,176
APS-SF-0410	1,165	46	26	20	16	22	1,380
APS-SF-0412	795	31	18	14	11	22	1,584
APS-SF-0414	577	22	13	10	8	22	1,790
APS-SF-0416	438	17	10	8	7	22	1,994
APS-SF-0806	1,150	47	28	22	17	43	1,432
APS-SF-0808	862	36	22	17	14	43	1,746
APS-SF-0810	690	29	18	14	12	43	2,060
APS-SF-0812	575	24	15	12	10	43	2,374
APS-SF-0814	493	21	13	11	9	43	2,690
APS-SF-0816	431	18	12	10	8	43	3,004





# MODULAR BOXES



## MODULAR BOXES

Engineered for high strength, ultra-low weight, and ease of handling. Modular panels, end-members, and adjustable spreaders are light enough for transport by pickup, and can be quickly configured for 2, 3 or 4-sided applications.

### Features include:

- 2'x4' – 2'x16' Panels
- 4' – 12' Corner posts
- Guide frame panels & aluminum sheeting



MODEL	PANEL SIZE (Ft.)		PANEL CAPACITY P.S.F.	MAXIMUM DEPTH RATING FOR SOIL TYPE (Ft.)				APPX. PANEL WEIGHT (Lbs.)
	HEIGHT	LENGTH		A-25	B-45	C-60	C-80	
MAPS-0204-B	2	4	2,400	50	50	40	30	30
MAPS-0206-B	2	6	2,400	50	50	40	30	87
MAPS-0208-B	2	8	1,440	50	33	24	18	116
MAPS-0210-B	2	10	960	36	21	16	12	145
MAPS-0212-B	2	12	780	31	17	13	9	174
MAPS-0214-B	2	14	600	24	13	10	7	203
MAPS-0216-B	2	16	480	19	11	8	6	232

**ALWAYS LEAD, NEVER FOLLOW**



# MANHOLE SHIELDS



## MANHOLE SHIELDS

Manhole shields are designed for manhole installations with optional cutouts for incoming utilities. Available in both single-wall and double-wall configurations to match the depth and capacities of your particular job requirement.



### Features include:

- Steel construction
- 8'x8' – 10'x10' Sizes

MODEL	CAPACITY P.S.F.	MAXIMUM DEPTH RATING FOR SOIL TYPE (Ft.)					VERTICAL PIPE CLEARANCE (In.)	APPX. WEIGHT (Lbs.)
		A-25	B-35	B-45	C-60	C-80		
<b>4" DOUBLE WALL</b>								
MHS-0410-DW	3,285	50	50	50	50	42	22"	3,575
MHS-0412-DW	2,228	50	50	50	38	29	22"	4,200
<b>4" DOUBLE WALL WITH CUT-OUTS</b>								
MHS-0810-DW-RC	2,238	50	50	50	40	31	45"	5,440
MHS-0812-DW-RC	1,465	50	44	35	27	21	45"	6,475





## MANGUARD SHIELDS

Manguard shields are specifically designed for personnel protection during manhole installations, line taps, vault placements and point repairs. Their cylindrical construction incorporates high-strength corrugated steel walls welded securely to rigid steel collars, with lifting eyes, stacking sockets and adjustable legs.

### Features include:

- High-strength corrugated steel construction
- 8.5'x4', 8.5'x8', 10'x4', and 10'x8' Sizes
- Certification plate
- Combination lifting eyes/stacking guides
- Adjustable leg supports
- Quick-connect pins & keepers
- Flat mating surfaces (top & bottom)
- Optional cut-outs (three sides)



MODEL	DIAMETER O.D. (Ft.)	HEIGHT (Ft.)	DIAMETER I.D. (Ft.)	WEIGHT (Lbs.)	CAPACITY P.S.F.	ALLOWABLE DEPTH (Ft.) BY SOIL TYPE			
						A	B	C(60)	C
MG - 08.5 x 4	8.5	4	7	1,200	1,900	50	40	31	24
MG - 10 x 4	10.0	4	9	1,500	1,800	50	34	25	20
MG - 08.5 x 8-RC-40/40/24	--	--	--	2,600	1,600	24	24	24	16
MG - 10x8-RC-48/48/30	--	--	--	3,100	1,600	24	24	24	16



# MANHOLE BRACES

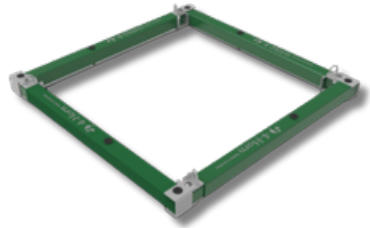


## MANHOLE BRACES

Manhole Braces are a unique 4-way hydraulic shoring system specifically designed to shore excavations for manholes, vaults, bore pits, and tank installations.

### Features include:

- 6'x6' – 20'x20'
- 4-Way hydraulic support with high strength, telescoping steel tubing over-sleeves
- Non-rigid corner brackets
- Individual legs for on-site assembly and easy transport
- Quick connect pins & keepers
- Flexibility to fit square or rectangular excavations



MODEL	CYLINDER DIAMETER (In.)	SPAN (Ft.)		MAXIMUM DEPTH OF EXCAVATION (Ft.)						
		MIN	MAX	4 Ft. O.C. VERT SPACING A&B C-60 C			3 Ft. O.C. SPACING A&B C-60 C			
<b>3" CLY WITH 6" BOX TUBING OVERSLEEVE</b>										
3-MHB-6-6	3	6	9	25	25	12	25	25	16	
3-MHB-6-7	3	7	10	25	25	12	25	25	16	
3-MHB-6-8	3	8	11	25	25	12	25	25	16	
3-MHB-6-9	3	9	12	19	14	7	25	20	9	
3-MHB-6-10	3	10	13	17	13	6	23	18	8	
3-MHB-6-11	3	11	14	15	11	5	21	16	7	
3-MHB-6-12	3	12	15	14	10	--	19	14	6	
3-MHB-6-13	3	13	16	13	9	--	17	13	5	
3-MHB-6-14	3	14	17	11	8	--	15	11	--	
3-MHB-6-15	3	15	18	9	7	--	13	10	--	
3-MHB-6-16	3	16	19	8	6	--	12	9	--	
3-MHB-6-17	3	17	20	7	5	--	10	8	--	



# HYDRAULIC SHORING

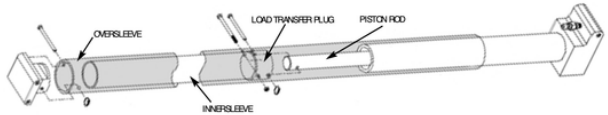


## HYDRAULIC VERTICAL SHORING

Hydraulic vertical shores are lightweight shoring devices that are pressurized against a trench wall to provide proactive soil support.

### Features include:

- 22" – 36"
- 34" – 55"
- 52" – 88"
- Up to 20' rails available
- 100% above-ground installation
- Aluminum alloy construction
- Easy-to-use hydraulic system
- Hinged, flat cylinder pads
- C-60 soil certification
- Optional one-piece extensions



MODEL	DESCRIPTION	CYLINDER RANGE Without Extension (in.)	CYLINDER RANGE With Extension (in.)
2-E-2711	11 inch Extension - Model 27	17-27	28-38
2-E-3611	11 inch Extension - Model 36	22-36	33-47
2-E-3622	22 inch Extension - Model 36	22-36	44-58
2-E-4630	30 inch Extension - Model 46	28-46	58-76
2-E-5536	36 inch Extension - Model 55	34-55	70-91
2-E-8824*	24 inch Extension - Model 88	52-88	76-112

\*Steel box tubing oversleeve may be required. Consult Speed Shore's tabulated data.



**ALWAYS LEAD, NEVER FOLLOW**

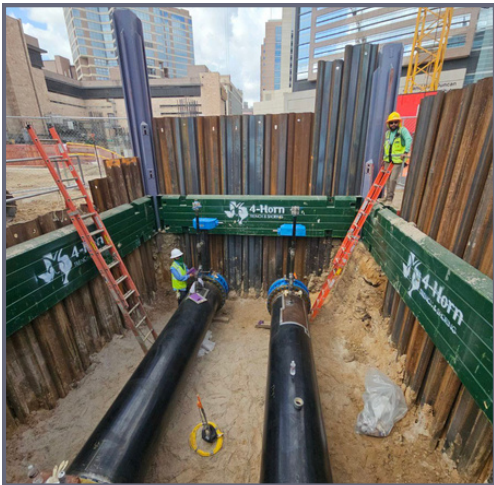
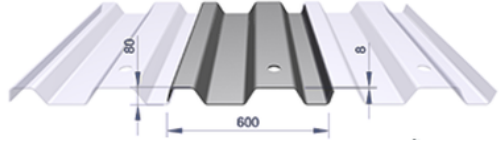


# SHEET PILE



## SHEET PILE

- 10' – 24' Lengths
- Overlapping KD 600/8 Profile
- Can be used in conjunction with hydraulic excavation braces and other systems



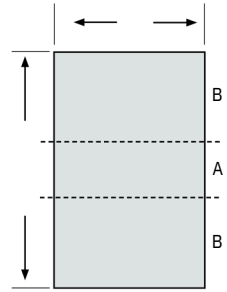
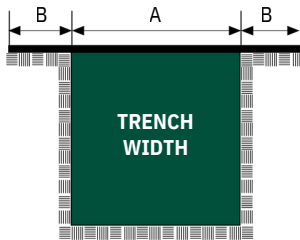
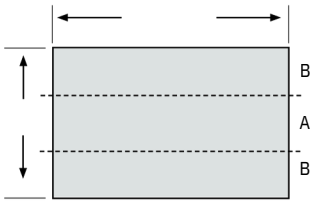


# ROAD PLATES



## ROAD PLATES

- 4'x8'x1" – 8'x20'x1" Sizes
- Rated to 40 MPH
- Superior Strength: Lifting lug has 52,000 lbs. breakout capacity. Recommended safe working load of 8,000 lbs.



A	B
24"	18"
36"	18"
36"	18"
36"	18"
32"	32"
40"	28"
48"	24"
60"	18"
60"	18"

W	L	T	Weight
5'	8'	1"	1634
6'	10'	1"	2450
6'	15'	1"	3670
6'	20'	1"	4890
8'	8'	1"	2610
8'	10'	1"	3268
8'	12'	1"	3920
8'	15'	1"	4900
8'	20'	1"	6530

A	B
20"	38"
24"	48"
24"	78"
24"	108"
32"	32"
32"	44"
32"	56"
32"	74"
32"	104"

**W** = Width of Plate  
**L** = Length of Plate

**T** = Thickness of Plate  
**A** = Maximum Trench Width (Span)

**B** = Minimum Plate Overlap



**ALWAYS LEAD, NEVER FOLLOW**



# BEDDING BOXES



## BEDDING BOXES

Bedding boxes eliminate waste of bedding material, and help to ease the movement of bedding material on the project as needed.

### Features include:

- 7 yard, 9 yard, & 12 yard Sizes
- High-tensile steel construction
- Half-inch steel bottoms and ends
- High-strength tubular frame
- Skid bottoms (standard)
- Radius - pipe skid bar
- Lifting/pulling lugs (standard)
- Sloped ends
- Lift/walk bars (standard)



MODEL	CAPACITY (Ou. Yds.)	DIMENSIONS (L, W, H) (In.)	WEIGHT (Lbs.)
BB-06.0-L	6.0	156 x 68 x 72	3,990
BB-07.5-L	7.5	162 x 80 x 79	4,625
BB-09.0-L	9.0	174 x 80 x 79	4,975
BB-12.0-L	12.0	204 x 84 x 93	5,690





# TESTING & SUPPORT EQUIPMENT

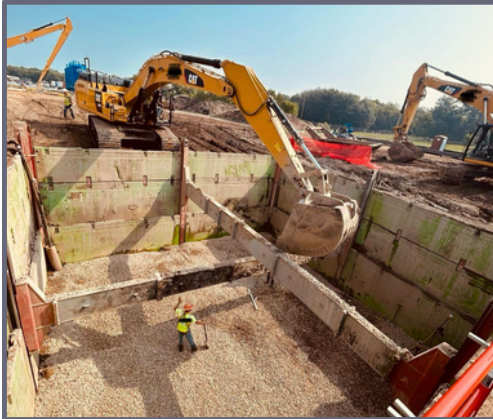
## TESTING EQUIPMENT

- Hydrostatic Test Pumps
- Pipe Plugs
- Manhole Testing Equipment



## SUPPORT EQUIPMENT

- Davit Arms
- Hand Rails
- Slings
- Confined Space Safety Equipment



**ALWAYS LEAD, NEVER FOLLOW**

# THE 4-HORN CUSTOMER COMMITMENT



**'Always Lead, Never Follow'** is the promise we make our customers. At 4-Horn Trench & Shoring, we strive for excellence and integrity in everything we do. When our people go to work, we set the bar for safety, expertise, and commitment.

This guiding principle is how we were founded. From how we hire, to how we grow relationships, to how we care for equipment and your job site, the 'Always Lead, Never Follow' mantra is at the heart.

You can get equipment anywhere. You choose 4-Horn because we lead the market and drive excellence.

## 12 LOCATIONS



Houston, TX  
Beaumont, TX  
Hutto, TX  
San Antonio, TX  
Ft. Worth, TX  
Shreveport, LA  
Sulphur, LA  
Minneapolis, MN  
Omaha, NE  
Lakeland, FL  
Orlando, FL  
Jacksonville, FL



SCAN HERE

**ALWAYS LEAD, NEVER FOLLOW**

800.381.0176 | 4HORN TRENCH.COM